



STEELFAST

MODULAR SYSTEMS

**WORLD LEADING ROLLFORMING
TECHNOLOGY FOR LIGHT GAUGE
STEEL MODULAR CONSTRUCTION**

SFT300



STEELFAST
MODULAR SYSTEMS

STEELFAST ROLLFORMERS **A Light Gauge Steel Solution for Modular Construction**

STEELFAST is a “one stop shop” for light gauge steel modular construction integrating custom rollformers, design, engineering, detailing and component supply.

The light gauge steel chassis for modular construction developed by Modfloor Pty Ltd demanded dedicated rollforming machinery capable of producing the high tolerances required to provide the structural integrity of the MODFLOORPLUS chassis and manufacturing product at a rate to meet the escalating demand. This resulted in development of the multi-profile SFT300 rollformer with five custom profiles from 150mm to 350mm that can be changed automatically in under two minutes.

Manufacturing licenses are available to SFT300 users for use of the MODFLOORPLUS light gauge steel chassis patents, MODCORE subfloor insulation systems and MODFRAME multi-level wall systems.

Manufacturing licenses include the option of full design, engineering and detailing services converting architectural plans to machine ready files ready for production eliminating the need for in-house steel designers and detailers. Steelfast rollformers have been developed to minimise manufacturing labour requirements and enhance the profitability for LGS manufacturers and modular builders.

The range includes 75mm, 89mm and 150mm single profile machines for the manufacture of frames and trusses and the multi-profile SFT200 capable of producing multiple profiles between 75mm and 200mm.



Custom built to our specifications, the SFT300 has been developed from 30 years of international light gauge steel manufacturing experience in Australia, New Zealand and USA. Developed primarily for the modular construction industry, the SFT300 is also ideally suited to traditional construction.

The SFT300 includes custom tooling designed for the manufacture of the MODFLOORPLUS CHASSIS, but is also capable of manufacturing C&U sections for mid and subfloors, deck framing and purlins providing maximum flexibility.

The FST300 is a multi-profile machine that can change profiles automatically in under two minutes. The computer controls all machine functions from levelling, punching and cutting to machine speed and include remote control.



SFT300 KEY FEATURES

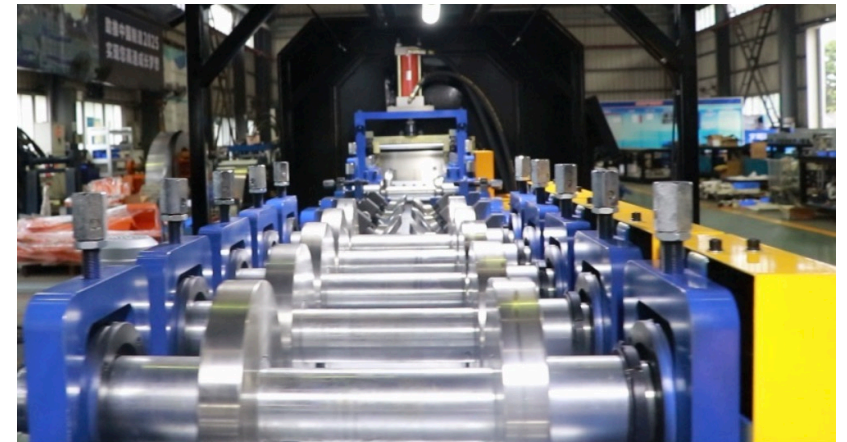
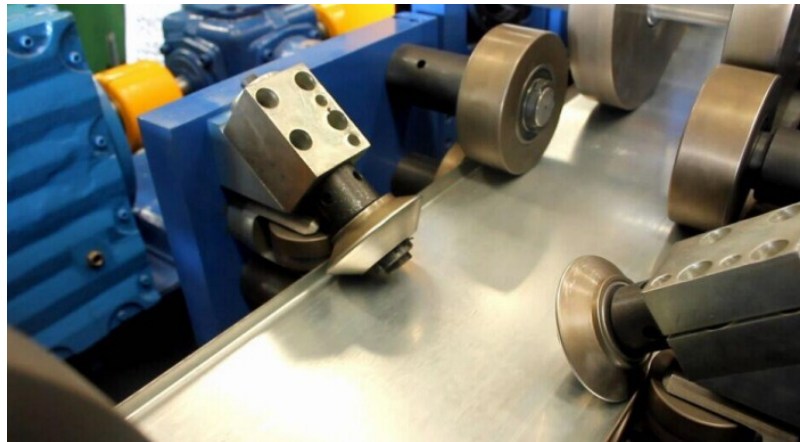
- Custom tooling to manufacture MODFLOORPLUS chassis systems
- Multi profiles maximises operations - 150mm-200mm-250mm-300mm-350mm
- Fast automatic profile change under two minutes with remote control
- Specialised joist tooling for HVAC, plumbing and electrical installation
- Material gauge between 1.00mm and 2.5mm
- C&U profiles for deck framing, residential mid and sub floors and commercial
- Warranty, training and comprehensive spare parts package included

SFT300 SPECIFICATIONS

CAPABILITY	Custom tooling and patents to manufacture MODFLOORPLUS LGS chassis for modular construction
SYSTEM PROFILES	Five profiles - 150mm-200mm-250mm-300mm-350mm
PROFILE ADJUSTMENT	The control panel automatically changes profile sizes in under two minutes. Profile and flange heights can be automatically adjusted by the control panel
ROLLFORMING	19 roller groups move in and out automatically
LEVELLING DEVICE	11 rollers (5 upper & 6 lower) to flatten coil before feeding into the rollformer
PUNCHES	<ul style="list-style-type: none">• Single Web Tab in 200-250-300-350 profiles with pre and post punch• Web holes x 2• Small service hole 65x120• Large service hole 100 x 200 in 200/250/330/350 profiles• Super large service hole 200 x 400 in 300/350 profiles• Bolt hole 13.5mm• Flange hole 23mm• Lip cut both lips• Flange cut 55mm• Swage Cut
SOFTWARE	Vertex BD for design, detailing and machine operation
PRINTING SYSTEM	Dual print head prints both sides of flange

SFT300 SPECIFICATIONS CONTINUED

PC CONTROL SYSTEM	TXT or CSV format able to be sent to machine by WiFi or memory stick - PLC can control production line including leveling, punching, cutting, conveyor table and roll forming station and speed. PLC manufacturer - Innovance
MATERIAL THICKNESS	1.0mm to 2.5mm
YEILD STRENGTH	235Mpa to 550Mpa
MACHINE DIMENSIONS	Length 11.5m - Width 2.2m - Height 1.8m
LINE DIMENSIONS	Length 22m - Width 2.2m - Height 1.8m
MACHINE WEIGHT	18.5 metric tonnes
PRODUCTION SPEED	32 metres per minute
WORKING SPEED	5 -12 metres per minute punch dependent
MAIN DRIVE SYSTEM	30kw servo motor 415v - 50hz
HYDRAULIC SYSTEM	11kw- 16Mpa - 200 litre tank



SFT300 SPECIFICATIONS CONTINUED

POWERED DECOILER	4.0T capacity with automatic coil tightening and 4KW motor
SAFETY COVERS	Machine stops when covers opened
RUNOUT FRAME	6 metres - extended options available
SPARE PARTS	Comprehensive 175 sector components in dedicated parts cabinet
WARRANTY	12 Months from date of installation
DELIVERY TIME	120 days plus shipping
OPERATOR TRAINING	Two weeks onsite installation and operator training



MODFLOORPLUS LGS CHASSIS

DEVELOPED BY MODFLOOR PTY LTD, MODFLOORPLUS is changing the way chassis are constructed for modular buildings.

The system does not require any measuring, cutting or welding and construction time is substantially reduced as chassis can be assembled by unskilled labour in under three hours with little or no training.

Strength and rigidity has been proven by independent testing with deflection reduced to 2-3 millimetres eliminating the need for additional frame bracing and dramatically reducing the need for on-site repairs after delivery. When combined with MODFRAME frame and trusses a top lift option is available.

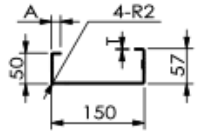
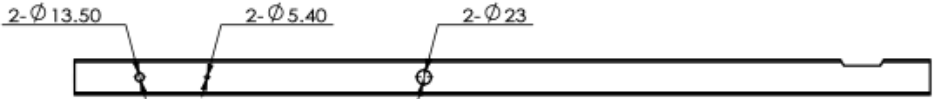
The combination lifting and transport bracket is reusable further reducing cost and manufacturing time.



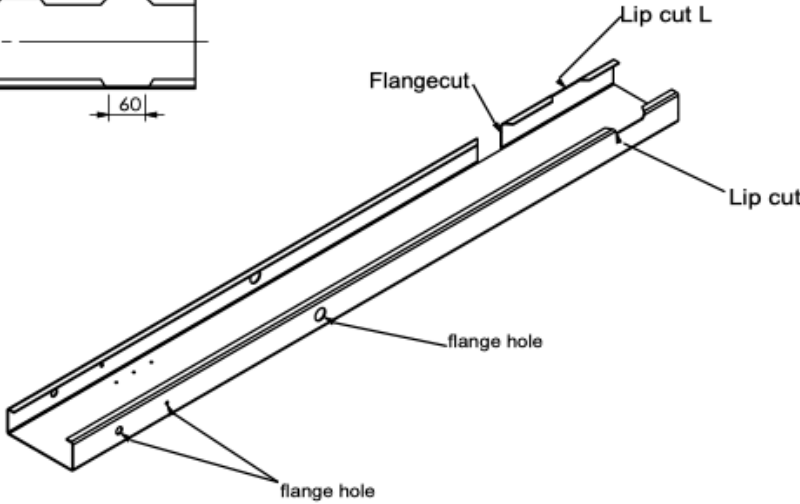
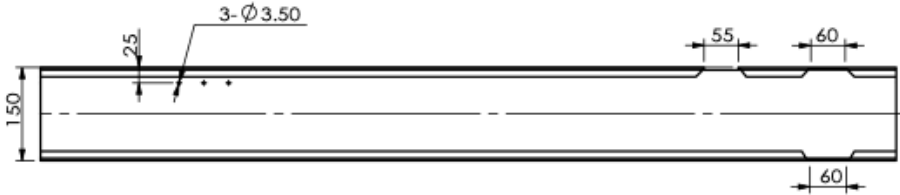
[Download the independent load test here.](#)

Perimeter beams have pre-punched and pre-drilled tabs positively locating joists pre-punched with large holes for installation of plumbing, electrical and waste services. MODFLOORPLUS chassis are typically 40% to 50% lighter than a welded chassis and are manufactured from ZinMag 310 steel offering corrosion warranties of up to 50 years.

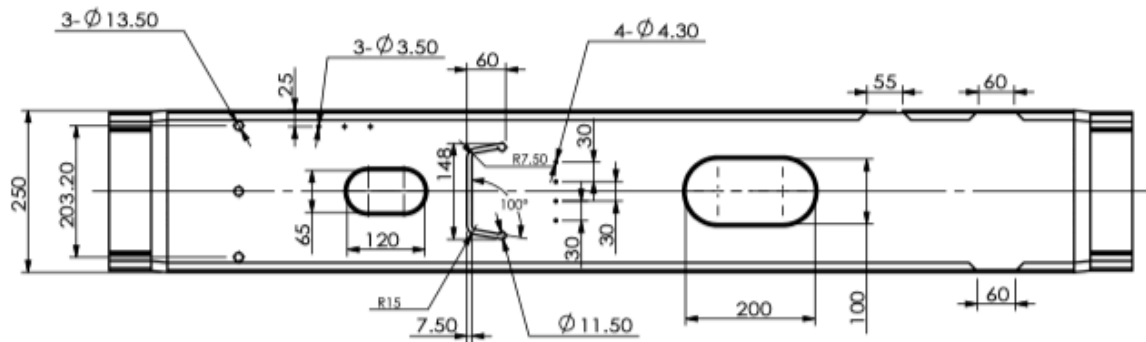
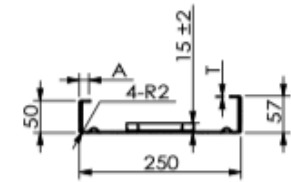
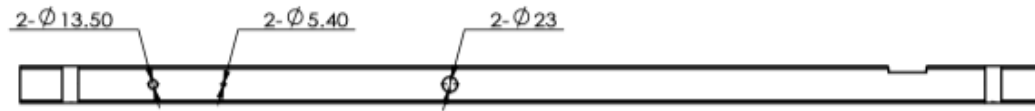
SFT150 PROFILE



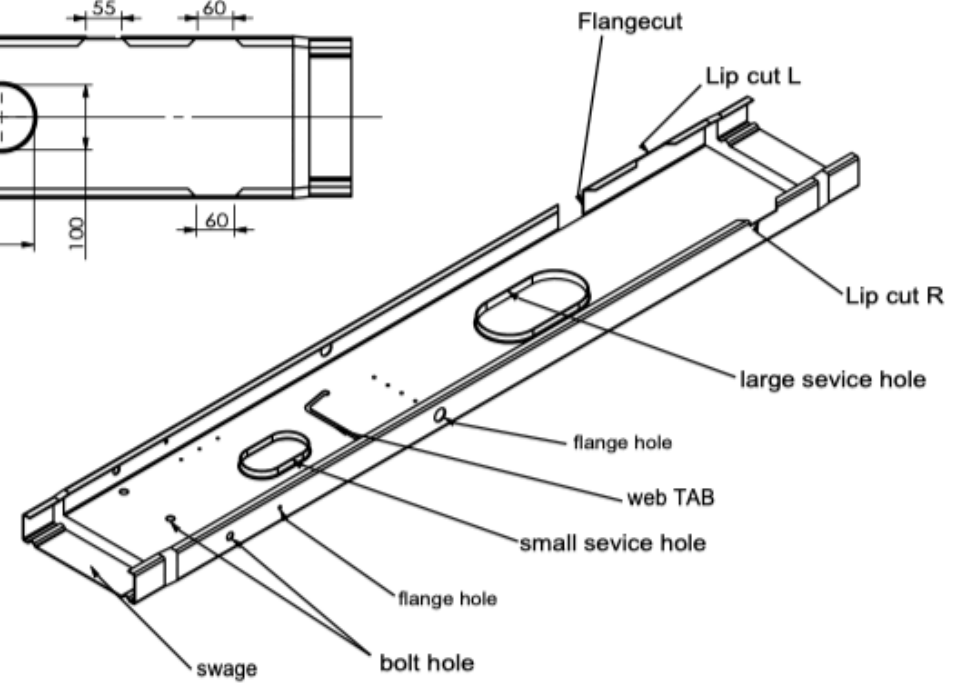
A:10-15
T:1.0-2.5



SFT250 PROFILE

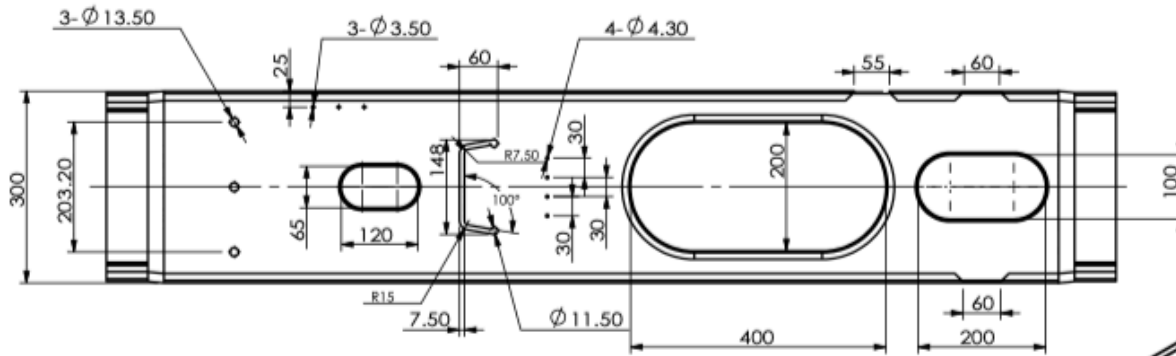
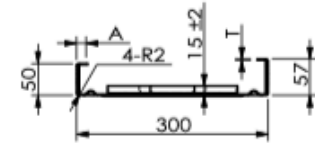
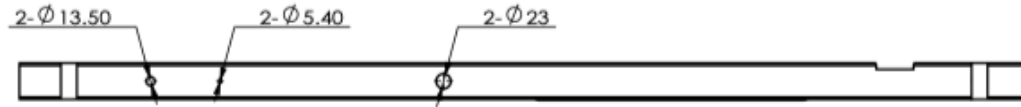


A:10-15
T:1.0-2.5

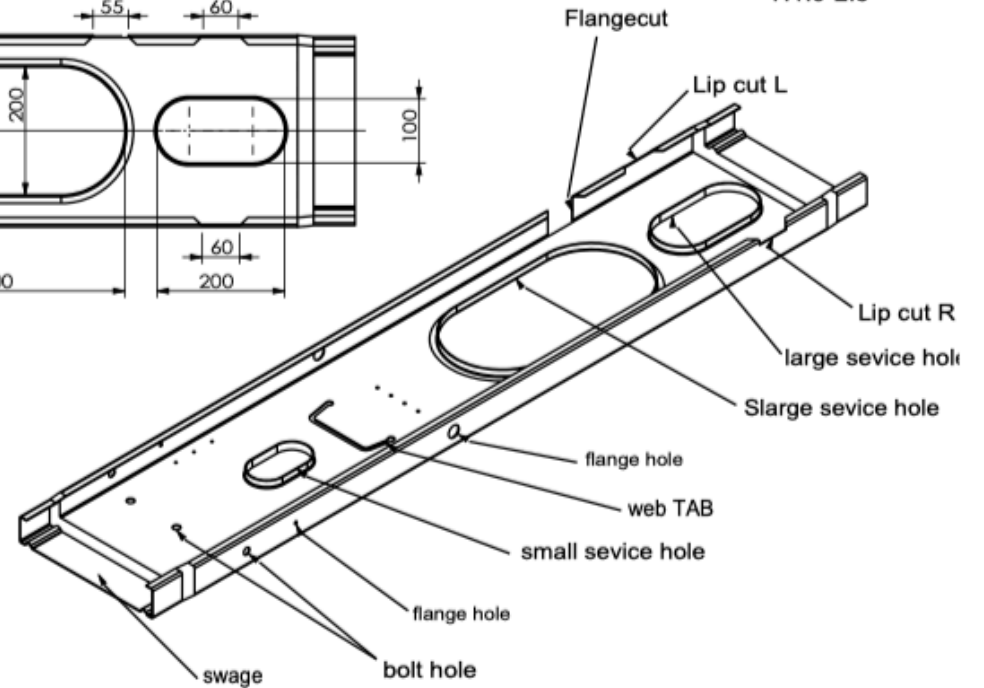


SFT250 PROFILE

SFT300 PROFILE

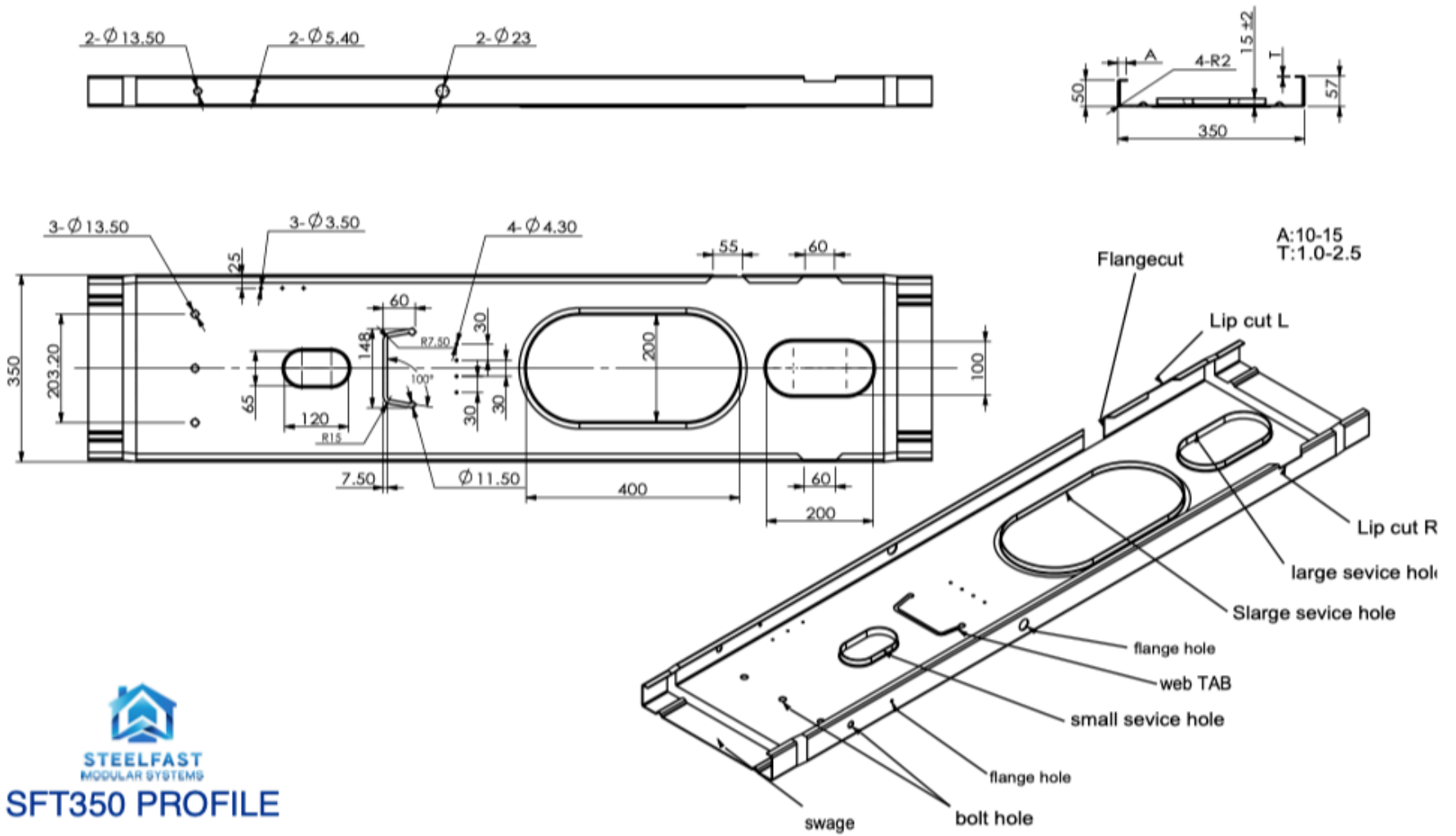


A: 10-15
T: 1.0-2.5




STEELFAST
 MODULAR SYSTEMS
SFT300 PROFILE

SFT350 PROFILE



SFT350 PROFILE

YOUR WORKSHOP

Tools to enhance your product, scale up, save time and stay profitable..

Your Workshop assists modular builders and manufacturers across **Australia, New Zealand, Asia and Europe** convert “standard” architectural layouts into high-performing modular solutions—fast—during the most intense part of the programme: pre-construction.

We’re set up specifically for modular delivery: a **multi-disciplined, modular-first team** spanning **licensed builders, project managers, architects, civil and structural engineers, interior designers, BIM coordinators, visualisation specialists**, plus **light-gauge steel (LGS) framing detailers**.

WHAT WE DO

Modular Design Development

A complete modular design-to-delivery toolkit, tailored to your system and workflow:

From panelised systems through to volumetric modular, we develop designs that work in the factory and on site—without losing the architectural intent.

- **Concept-to-DD** modular optimisation (DfMA planning, module strategies, tolerances, interfaces)
- **Module breakdowns** and repeatable typologies for scalable manufacture
- **Design coordination** across structure, services and interiors
- **Site + logistics considerations** (transport envelopes, crantage, staging, install sequencing)
- **LGS & timber framing** detailing for manufacture-ready output
- **Architectural design & documentation** (Revit, Archicad)





STEELFAST

MODULAR SYSTEMS

CONTACT US

AUSTRALIA HEAD OFFICE

Phone: 0412 918 297

Email: sales@steelfast.co

Web: <https://www.steelfast.co/>

Address: Unit 18-75 Waterway Drive
Coomera, Qld 4209

VICTORIA & SOUTH AUSTRALIA

Phone: 0402 702 706

Email: sales@steelfast.co

Web: <https://www.steelfast.co/>

Address: Suite 3 22 Council Street
Hawthorne East Vic 2123