



# STEELFAST

## MODULAR SYSTEMS

**WORLD LEADING ROLLFORMING  
TECHNOLOGY FOR LIGHT GAUGE  
STEEL MODULAR CONSTRUCTION**

**SFT150**



**STEELFAST**  
MODULAR SYSTEMS

## **STEELFAST ROLLFORMERS** **A Light Gauge Steel Solution for Modular Construction**

STEELFAST is a “one stop shop” for light gauge steel modular construction integrating custom rollformers, design, engineering, detailing and component supply.

Options of full design, engineering and detailing services converting architectural plans to machine ready files ready for production eliminating the need for in-house steel designers and detailers. Steelfast rollformers have been developed to minimise manufacturing labour requirements and enhance the profitability for LGS manufacturers and modular builders.

The range includes 75mm, 89mm and 150mm single profile machines for the manufacture of frames and trusses and the multi-profile SFT200 capable of producing profiles between 75mm and 200mm.

### **SFT150 KEY FEATURES**

- Feed and levelling rollers to ensure high precision punching
- Flare control rollers to straighten coil to ensure punch precision
- Flared service hole with lip edge eliminating the need for grommets
- Squeezing device avoids extrusion in high speed production improving accuracy
- Material gauge 0.75mm to 1.2mm
- Automatic gauge adjustment for varying coil thickness
- Warranty, training and comprehensive spare parts package



Built to our specifications, the SFT150 has been developed from 30 years of international light gauge steel manufacturing experience in Australia, New Zealand and USA. Developed primarily for the modular construction industry but is also ideally suited to traditional construction.

The SFT150 includes custom tooling designed for the manufacture of the light gauge steel frames and trusses for residential up to 3 levels, modular and light commercial construction.

Standard Profile is 150mm, punches up to 1.2mm in thickness and supports manufacture of back-to-back trusses.

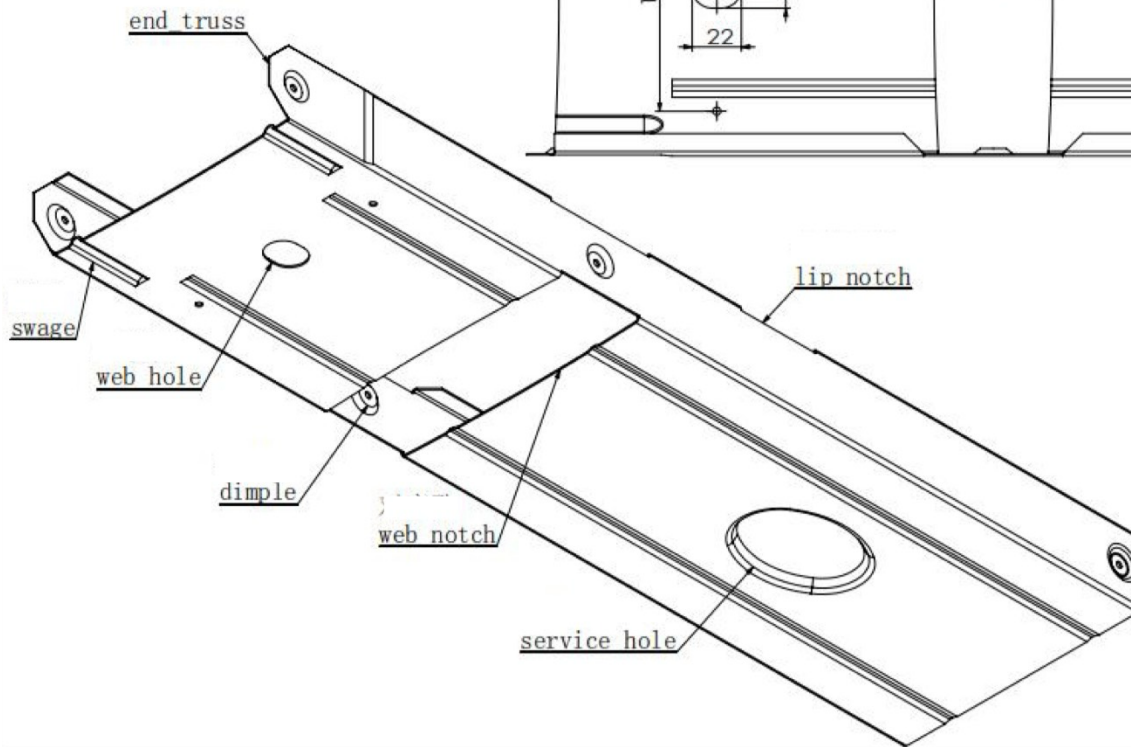
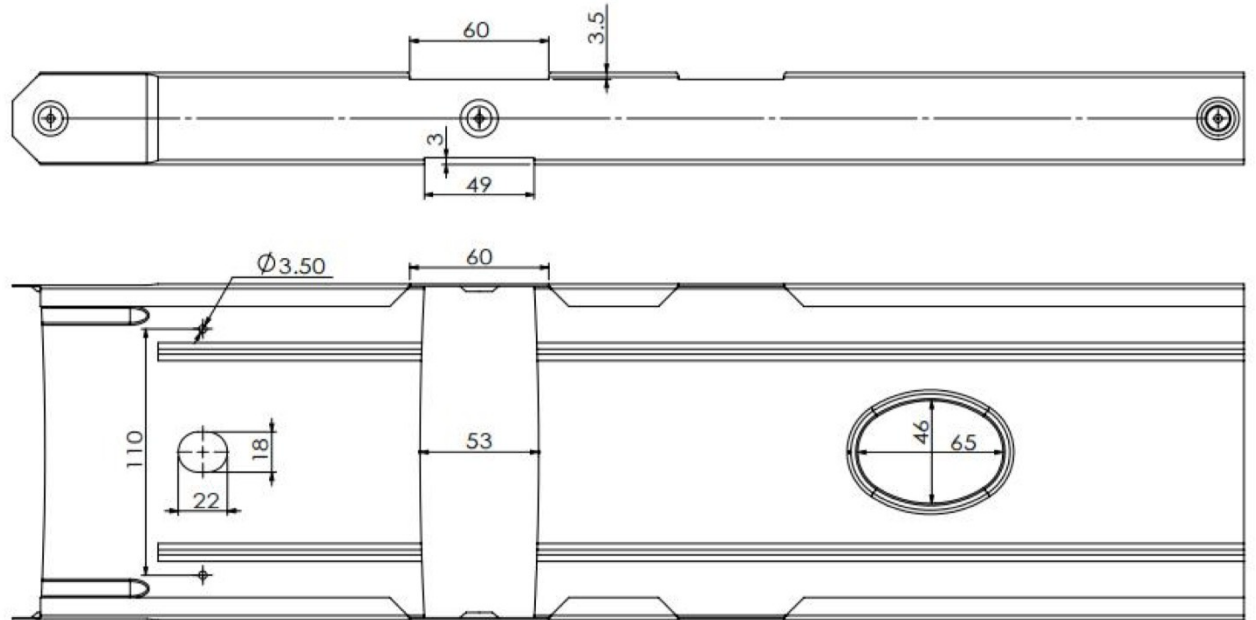
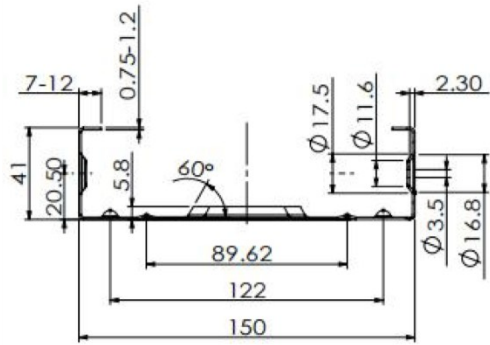
## SFT90 SPECIFICATIONS

SYSTEM PROFILE	Single C & U profiles of 150mm
GAUGE ADJUSTMENT	Automatic gauge adjustment
FLARE CONTROLL ROLLERS	Two groups of four rollers with manual adjustment to straighten shape and ensure length precision
ROLLFORMING	13 roller groups
LEVELLING DEVICE	4 rollers (2 upper & 2 lower) to flatten coil before feeding into the rollformer
SQUEEZE PREVENTION	Patented device to avoid extrusion in high speed production improving punch accuracy
PUNCHES	<ul style="list-style-type: none"><li>• Web hole 18mm x 22mm</li><li>• Dimple 4.8mm</li><li>• Service hole 46 x 65</li><li>• Swage Cut</li><li>• Lip cut 60mm</li><li>• End truss cut</li><li>• Web notch 53mm</li><li>• Punching precision+/- 1mm</li></ul>
SOFTWARE	Vertex BD for design, detailing and machine operation
PRINTING SYSTEM	Dual print head prints both sides of flange
PC CONTROLL SYSTEM	TXT or CSV format able to be sent to machine by WiFi or memory stick - 21" PLC can control production line including leveling, punching, cutting, conveyor table and roll forming station and speed. PLC manufacturer - Innovance

## SFT90 SPECIFICATIONS CONTINUED

POWERED DECOILER	3.0T capacity with automatic coil tightening and 3KW motor
REMOTE CONTROL	External Remote control
MATERIAL THICKNESS	0.75mm to 1.2mm
YEILD STRENGTH	G550Mpa
TENSILE STRENGTH	355Mpa to 480Mpa
FLANGE HEIGHT	41mm
MACHINE DIMENSIONS	Length 5.5m - Width 1.35m - Height 1.5m
LINE DIMENSIONS	Length 12.4m - Width 1.35m - Height 1.5m
MACHINE WEIGHT	4 metric tonnes
PRODUCTION SPEED	48 metres per minute
WORKING SPEED	5-12 metres per minute punch dependent
MAIN DRIVE SYSTEM	7.5kw servo motor 415v - 50hz
HYDRAULIC SYSTEM	7.5kw- 16Mpa - 160 litre tank
SAFETY COVERS	Machine stops when covers opened
RUNOUT FRAME	4 metres - extended options available
SPARE PARTS	Compehensive 126 sector components in dedicated parts cabinet
WARRANTY	12 Months from date of installation
DELIVERY TIME	50 days plus shipping
OPERATOR TRAINING	Two weeks onsite installation and operator training

# SFT150 PROFILE



## YOUR WORKSHOP

**Tools to enhance your product, scale up, save time and stay profitable..**

**Your Workshop** assists modular builders and manufacturers across **Australia, New Zealand, Asia and Europe** convert “standard” architectural layouts into high-performing modular solutions—fast—during the most intense part of the programme: pre-construction.

We’re set up specifically for modular delivery: a **multi-disciplined, modular-first team** spanning **licensed builders, project managers, architects, civil and structural engineers, interior designers, BIM coordinators, visualisation specialists**, plus **light-gauge steel (LGS) framing detailers**.

## WHAT WE DO

### Modular Design Development

A complete modular design-to-delivery toolkit, tailored to your system and workflow:

From panelised systems through to volumetric modular, we develop designs that work in the factory and on site—without losing the architectural intent.

- **Concept-to-DD** modular optimisation (DfMA planning, module strategies, tolerances, interfaces)
- **Module breakdowns** and repeatable typologies for scalable manufacture
- **Design coordination** across structure, services and interiors
- **Site + logistics considerations** (transport envelopes, crantage, staging, install sequencing)
- **LGS & timber framing** detailing for manufacture-ready output
- **Architectural design** & documentation (Revit, Archicad)





# STEELFAST

## MODULAR SYSTEMS

### CONTACT US

#### AUSTRALIA HEAD OFFICE

Phone: 0412 918 297

Email: [sales@steelfast.co](mailto:sales@steelfast.co)

Web: <https://www.steelfast.co/>

Address: Unit 18-75 Waterway Drive  
Coomera, Qld 4209

#### VICTORIA & SOUTH AUSTRALIA

Phone: 0402 702 706

Email: [sales@steelfast.co](mailto:sales@steelfast.co)

Web: <https://www.steelfast.co/>

Suite 3 22 Council Street  
Hawthorne East Vic 2123